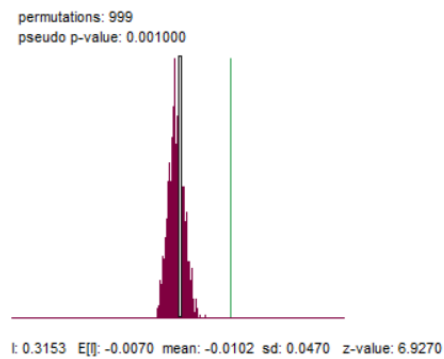
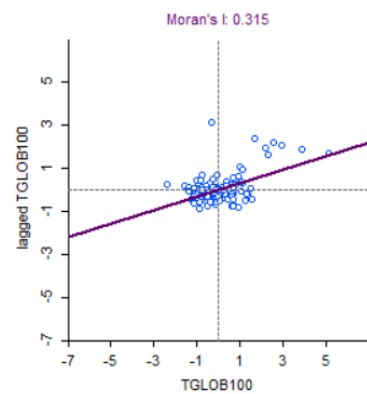
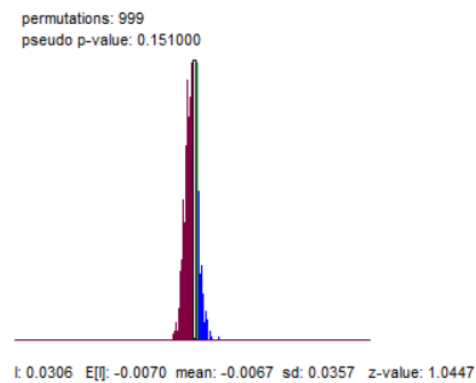
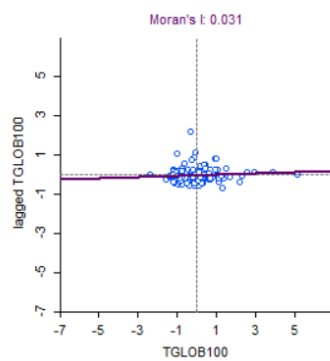


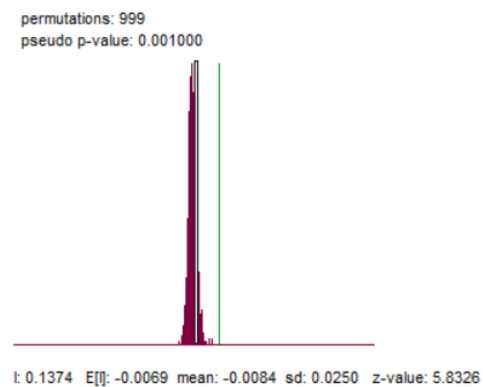
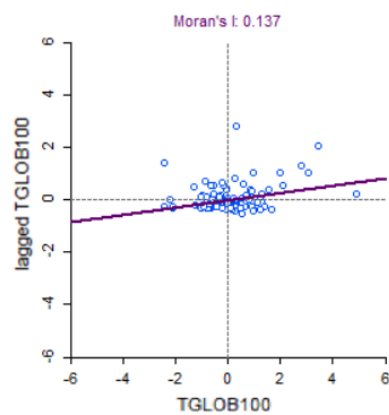
Supplementary materials



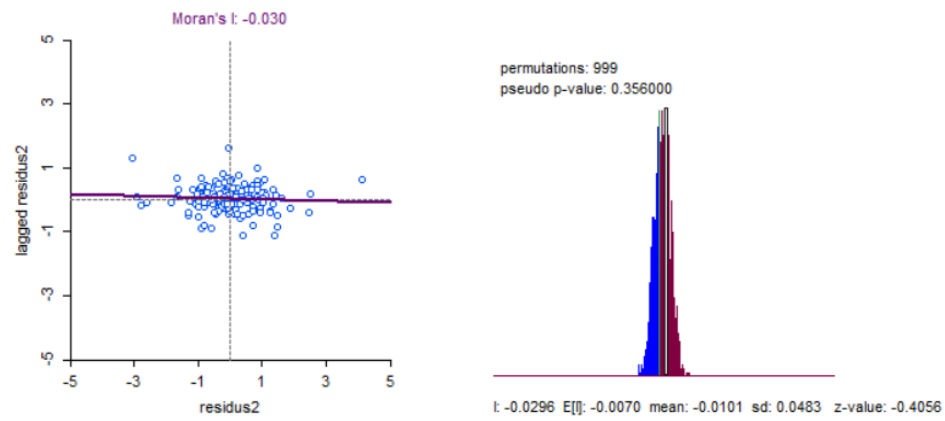
First-order contiguity matrix.



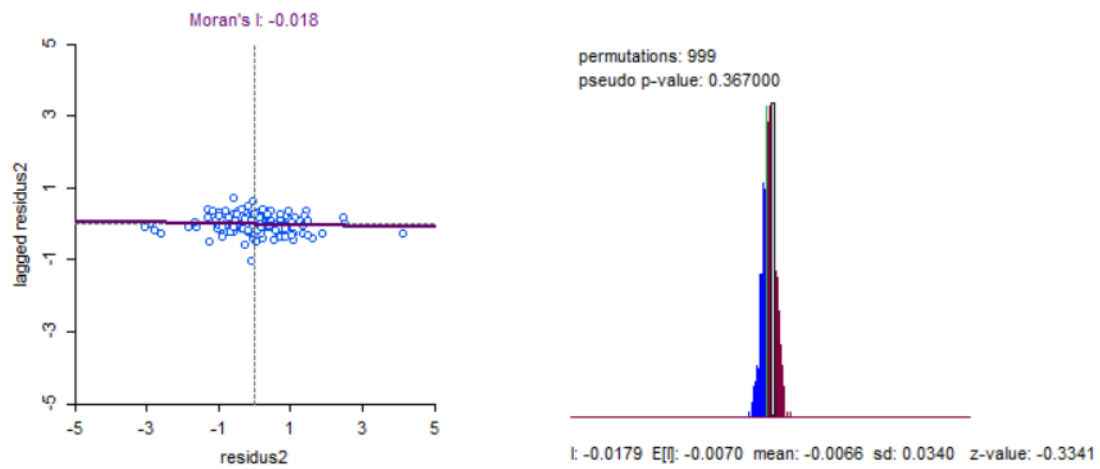
Second order contiguity matrix.



Inverse distance matrix.



Moran residuals with first-order contiguity matrix.



Moran residuals with second-order contiguity matrix.

```
Call:
lm(formula = TBstd ~ idhl_std + tcom_std + hlmv_std + imm_std +
    scol_std, data = baseCovid_std)
```

Residuals:

	Min	1Q	Median	3Q	Max
	-2.3583	-0.4349	-0.0402	0.4472	3.1699

Coefficients:

	Estimate	Std. Error	t value	Pr(> t)
(Intercept)	8.543e-17	6.514e-02	0.000	1.000000
idhl_std	-3.191e-01	1.629e-01	-1.958	0.052190 .
tcom_std	-3.252e-01	8.947e-02	-3.635	0.000392 ***
hlmv_std	2.571e-01	1.080e-01	2.380	0.018667 *
imm_std	2.183e-01	1.059e-01	2.061	0.041172 *
scol_std	-1.229e-01	6.741e-02	-1.824	0.070373 .

Signif. codes: 0 '***' 0.001 '**' 0.01 '*' 0.05 '.' 0.1 ' ' 1

Residual standard error: 0.7817 on 138 degrees of freedom

Multiple R-squared: 0.4103, Adjusted R-squared: 0.389

F-statistic: 19.2 on 5 and 138 DF, p-value: 1.786e-14

DIAGNOSTICS FOR SPATIAL DEPENDENCE

FOR WEIGHT MATRIX : NIZZA_3

(row-standardized weights)

TEST	MI/DF	VALUE	PROB
Moran's I (error)	-0.0296	-0.1332	0.89405
Lagrange Multiplier (lag)	1	0.0084	0.92691
Robust LM (lag)	1	1.7515	0.18569
Lagrange Multiplier (error)	1	0.3486	0.55492
Robust LM (error)	1	2.0916	0.14811
Lagrange Multiplier (SARMA)	2	2.1000	0.34993

===== END OF REPORT =====

Regression with Geoda, weightmatrix: first-order contiguity.